

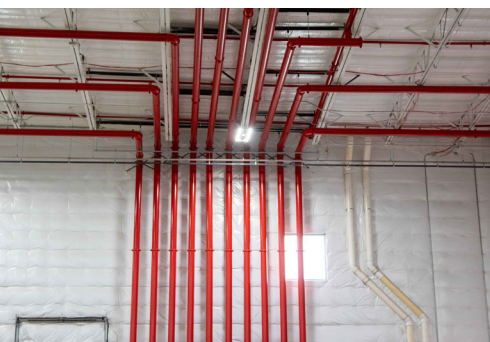


Markets & Project Types:

- ✓ Food and beverage processing plants
- ✓ Industrial and manufacturing facilities
- ✓ Process-driven facilities
- ✓ Green and brown field construction
- ✓ Facility retrofits and expansions
- ✓ Facility/Plant shutdown work
- ✓ Medical facilities
- ✓ Operational facilities
- ✓ Wastewater treatment facilities

DESIGN > BUILD > EQUIP > PERFORM

FOOD PROCESS MANAGEMENT | PROCESS DESIGN



Why Choose The Fisher MEP Team

We don't just design systems, we ensure they work in the field. Our MEP Department combines engineering insight with construction execution, delivering systems that are efficient, compliant, and ready to operate from day one.

MEP solutions built for reliability, constructability, and performance.

CORE CAPABILITIES

Mechanical Systems:

- ✓ Process Mechanical Systems
- ✓ Process Support Mechanical Systems
- ✓ Equipment Layout, utility coordination, and installation sequencing.
- ✓ Energy-efficient system integration
- ✓ HVAC system design coordination and installation management

Electrical Systems:

- ✓ Power distribution and service coordination
- ✓ Electrical single-line development
- ✓ Equipment power and control coordination
- ✓ Lighting and ground systems
- ✓ Integration with process and automation requirements

Plumbing & Piping Systems:

- ✓ Process utility piping (sanitary, process waste, and support utilities)
- ✓ Sanitary drain and underground process waste systems
- ✓ Eyewash and handwash station layout and routing
- ✓ Pipe routing, clash avoidance, and constructability reviews
- ✓ Code and regulatory compliance coordination

SHUTDOWN CAPABILITIES

Mechanical Systems:

- ✓ Daily planning, communication and coordination with the plant and their teams
- ✓ Both Client and Fisher Safety training prior to work starting
- ✓ Subcontractor selection and contracting
- ✓ Full-time onsite presence during work activities
- ✓ Micro or Macro schedules depending on client preference
- ✓ Pre-work hoarding / segregation efforts for work from design through construction (if required)
- ✓ Installation and system testing and commissioning – reports provided to client
- ✓ Final cleaning & sanitizing of work areas
- ✓ Management availability during first operations after shutdown



DESIGN, PRECONSTRUCTION & CONSTRUCTION

Early Planning to 60% Design



0% - 60% DESIGN

From early planning through the 60% design phase, our team partners closely with the owner to define project standards, operational requirements, and sanitary design criteria that set the foundation for success. We develop detailed equipment, valve, and instrumentation lists, evaluate existing equipment and utilities, and identify critical path sequencing early to reduce risk and improve constructability. Our team leads design coordination efforts, supports budget development and cost modeling, and assists with vendor and contractor vetting. Clear installation scopes of work and strategically structured mechanical and electrical bid packages are developed to support competitive bidding, pricing transparency, and efficient procurement.

Design Capability and Integrated MEP Coordination

Our in-house MEP team delivers coordinated, non-stamped design documentation including Basis of Design narratives, general arrangement drawings, 3D models, PFDs, P&IDs, pipe routing layouts, electrical single-line diagrams, underground process waste layouts, eyewash and handwash station routing, and sanitary drain system design. Working seamlessly with architects, structural and civil engineers, and BIM specialists, we provide constructible drawings and models that streamline installation, minimize field conflicts, and drive schedule certainty during construction.

60% to 100% Design



60% - 100% DESIGN

From 60% through 100% design, the team advances coordinated, non-stamped deliverables to support constructability, procurement, and installation. This includes underground process waste design; project-appropriate PFDs and P&IDs; finalized process utility schedules and piping layouts; integration of food safety, regulatory, and code requirements; and development of an advanced equipment, valve, and instrumentation list.

Design & Procurement Management

Design consultants are vetted, bid, and contracted, with centralized management of internal and external design teams. The process includes formal design reviews, markups, revision tracking, and clash detection using 3D coordination models. The team manages RFPs, bidding, and contracting for installation and specialty design packages, and reviews submittals and RFIs for technical and constructability compliance.

Construction Readiness & Cost Control

Revit and CAD are used to generate essential data including P&IDs, quantity take-offs, pipe/fitting take-offs, and material take-offs. After the 60% design, budget, and schedule are established, design consultants and design-build specialists (e.g., refrigeration, fire sprinkler, HVAC) are competitively bid. Early MEP engagement enables critical decisions to be made before full consultant spend, reducing risk and driving overall project cost and schedule savings.

Construction Support



CONSTRUCTION

MEP Construction Management and Execution

Our team provides comprehensive design and installation management across all MEP scopes, ensuring seamless coordination from mobilization through closeout. We lead trade coordination, sequencing, and on-site supervision to maintain schedule integrity and minimize conflicts between disciplines. Inventory is actively managed and tracked to support just-in-time installation, reduce downtime, and maintain material accountability. Quality, safety, and compliance are embedded throughout execution, with adherence to industry best practices, FM Global standards, applicable codes, and owner-specific requirements.

Field Management, Cost Control, and Project Closeout

During construction, our team performs ongoing P&ID markups and installation tracking, providing real-time visibility into system completion and readiness. We proactively resolve field conflicts and design interferences to maintain momentum and protect schedule. Critical path schedules are developed and continuously monitored, while costs are tracked, forecasted, and optimized through value engineering when appropriate. Commissioning and closeout activities include as-built redlines, QA/QC documentation, testing and inspection records, and complete O&M manuals—delivering fully documented, compliant, and operational MEP systems at turnover.

OFFICE LOCATIONS:

MAIN OFFICE

625 Fisher Lane
Burlington, WA 98233

SPOKANE OFFICE

4024 S Grove Road
Spokane, WA 99224

VANCOUVER OFFICE

3200 NW 38th Circle
Vancouver, WA 98660



BUILDING PERFORMANCE-DRIVEN FACILITIES FOR **50 YEARS**

CONTACT US TODAY

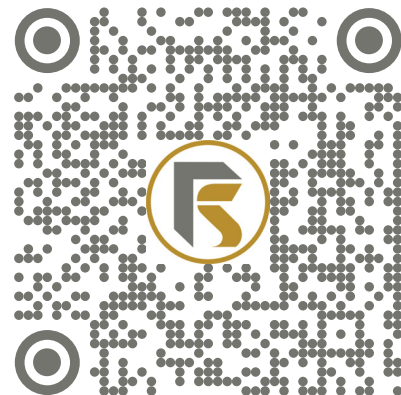
RONNIE HAMLIN

MEP Vice President

reh@fishercgi.com

360.757.4094

WWW.FISHERCGI.COM



SCAN TO LEARN MORE